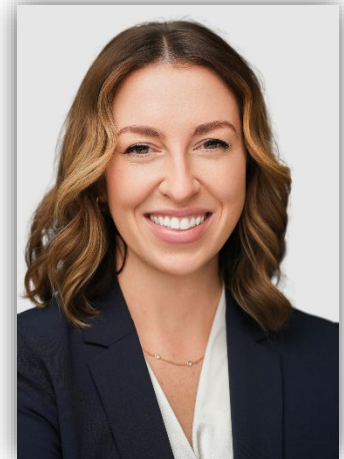


Mary A. Laird

Partner

Direct: 312.471.8688 **Email:** mlaird@rshc-law.com

An accomplished first-chair trial lawyer who has seen cases through from their first filings to their final appeals, Mary Laird is an advocate who clients trust to help them achieve positive outcomes in challenging circumstances. Whether arguing in a courtroom, conducting an internal investigation, or responding to a government inquiry, Mary is adept at getting up to speed quickly, prioritizing what matters most, and staying focused on results.



Mary serves clients in matters from discreet internal investigations to complex civil litigation, leveraging experience as a criminal prosecutor and federal judicial law clerk to achieve the best possible outcome for her clients. Before entering private practice, she prosecuted a wide range of criminal cases, including financial crimes, public corruption, fraud, and racketeering, and successfully wrote and argued appellate briefs before the Illinois Appellate Court. She also served as a judicial law clerk in the United States District Court for the Northern District of Illinois for four years, giving her invaluable insight into how cases are ultimately decided. She relies on that experience, and her institutional knowledge of the bench, to help streamline litigation and focus cases on the issues judges actually care about.

Clients dealing with high-stakes and high-profile matters appreciate Mary's level-headed demeanor and strong communication skills, which shine through in her written work as well as her examinations and depositions of experts and witnesses.

EXPERIENCE

Clerkships

Hon. Jeffrey T. Gilbert, U.S. District Court for the Northern District of Illinois (2019-2023)

CREDENTIALS

Education

Notre Dame Law School, J.D., 2013

President, Moot Court Appellate Board

A. Harold Weber Appellate Advocacy Award

University of Notre Dame, B.A. Economics, B.A. Spanish Language and Literature, Minor in Chinese, 2010

Lawrence J. Lewis Economics Award

Omicron Delta Epsilon International Honor Society for Economics



Bar Admissions

Illinois

U.S. District Court for the Northern District of Illinois

U.S. District Court for the Northern District of Illinois (Trial Bar)

Professional Memberships

Chicago Bar Association

Federal Bar Association

Seventh Circuit Bar Association

Chicago Council of Lawyers

COMMUNITY SERVICE

Chicago Symphony Orchestra, Overture Council, Member